

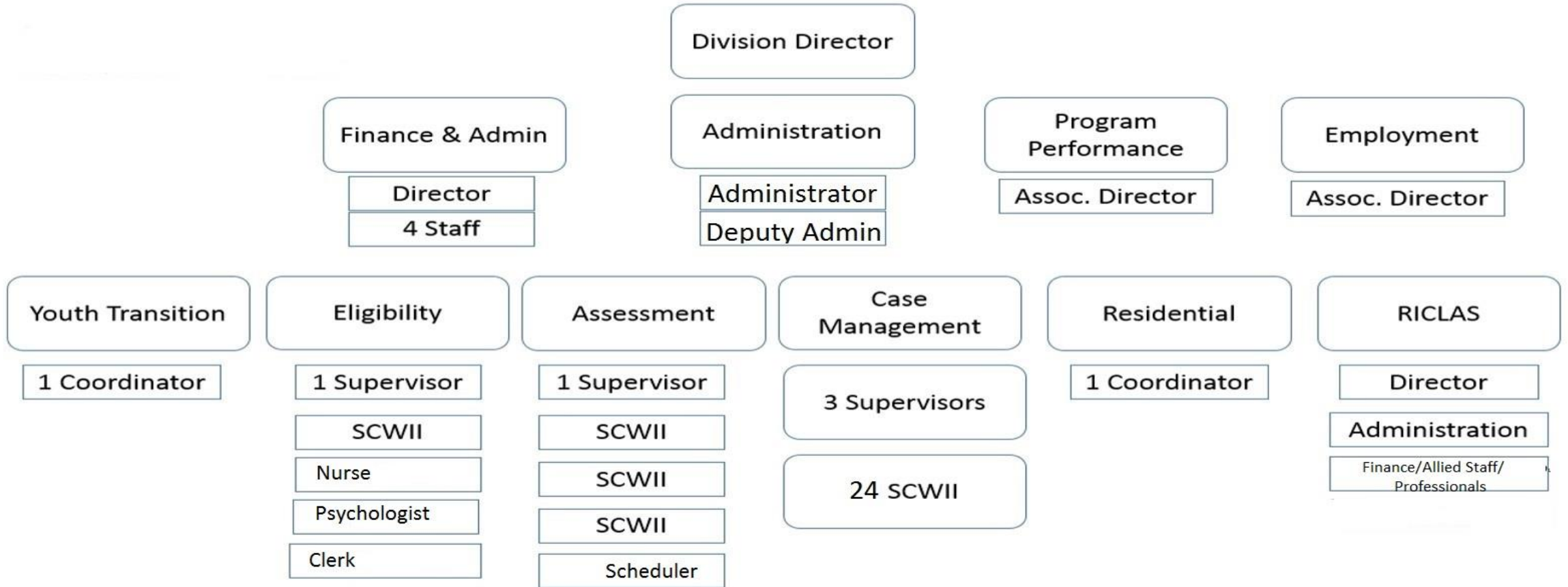
RI Department of Behavioral Healthcare, Development Disabilities & Hospitals

DIVISION OF DEVELOPMENTAL DISABILITIES





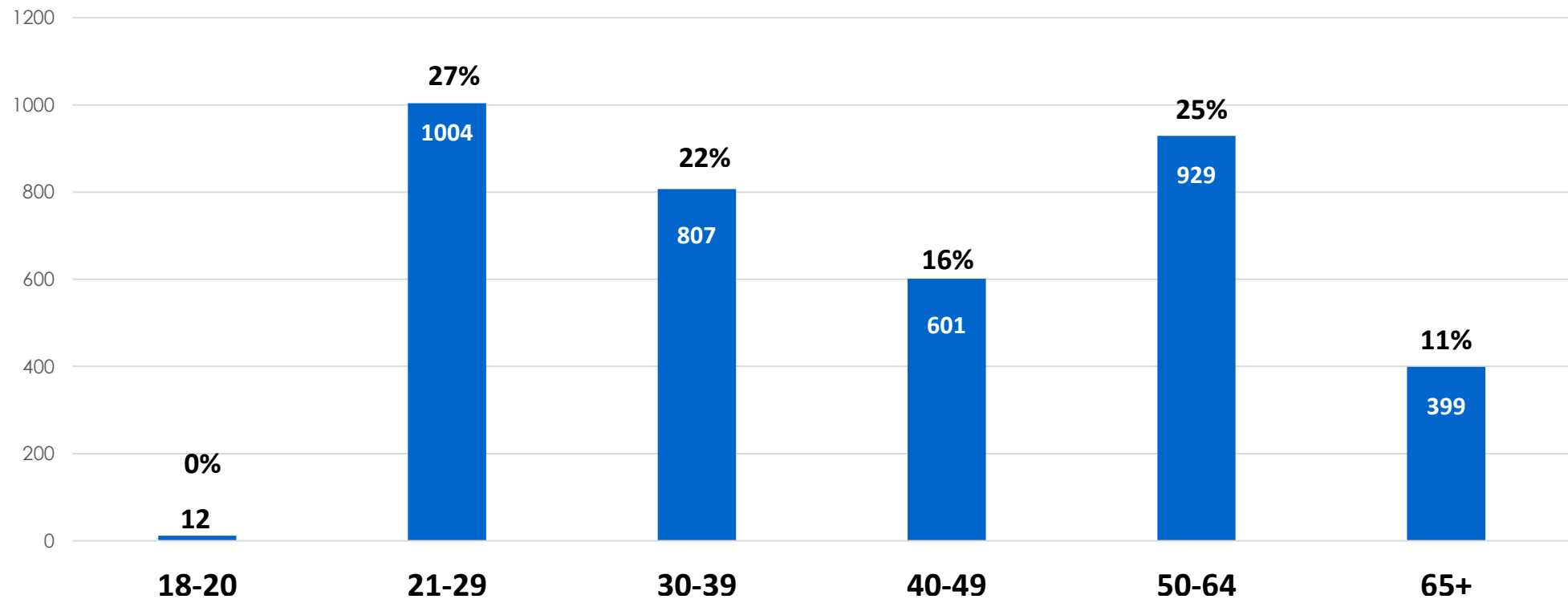
Developmental Disabilities Division



March 2017

Age Distribution of DD Division Consumers

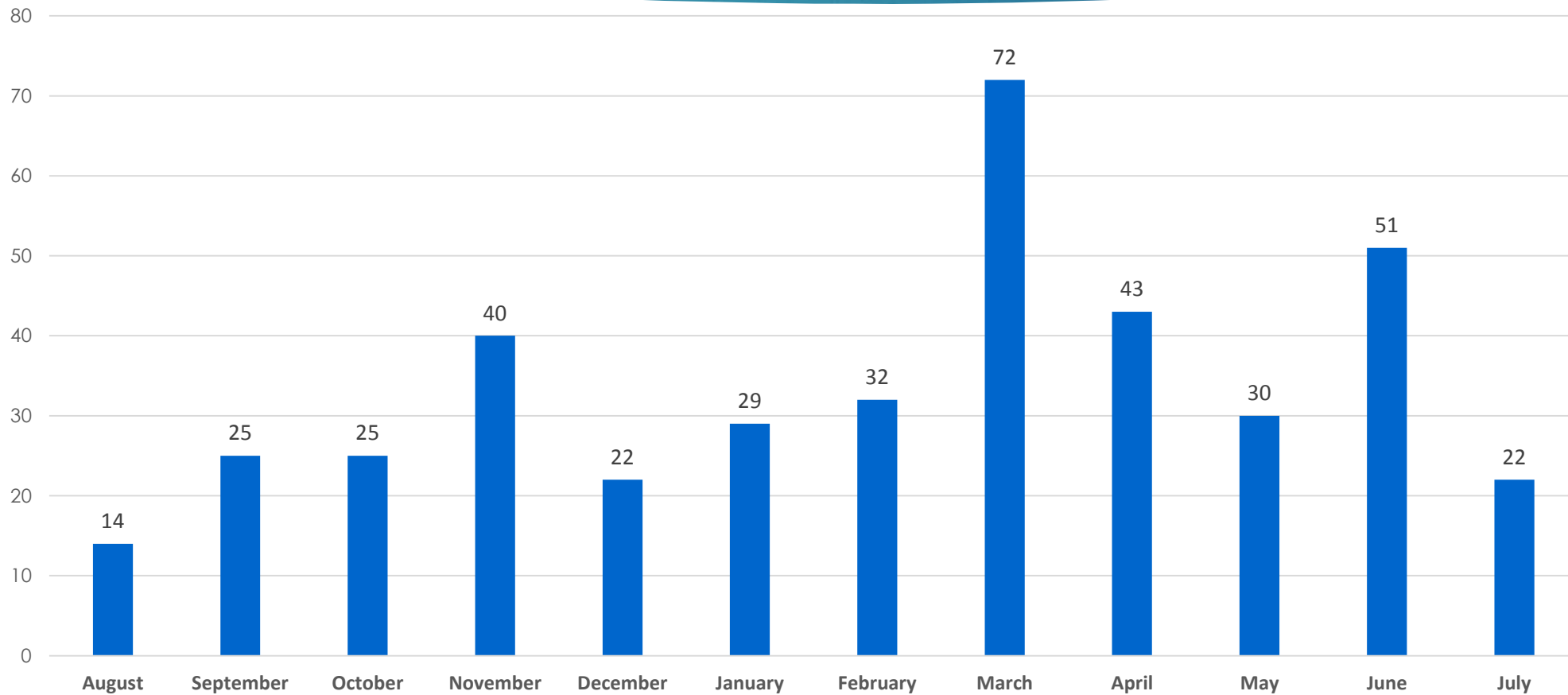
August 2017



Data current as of August 8, 2017
Based on open authorizations

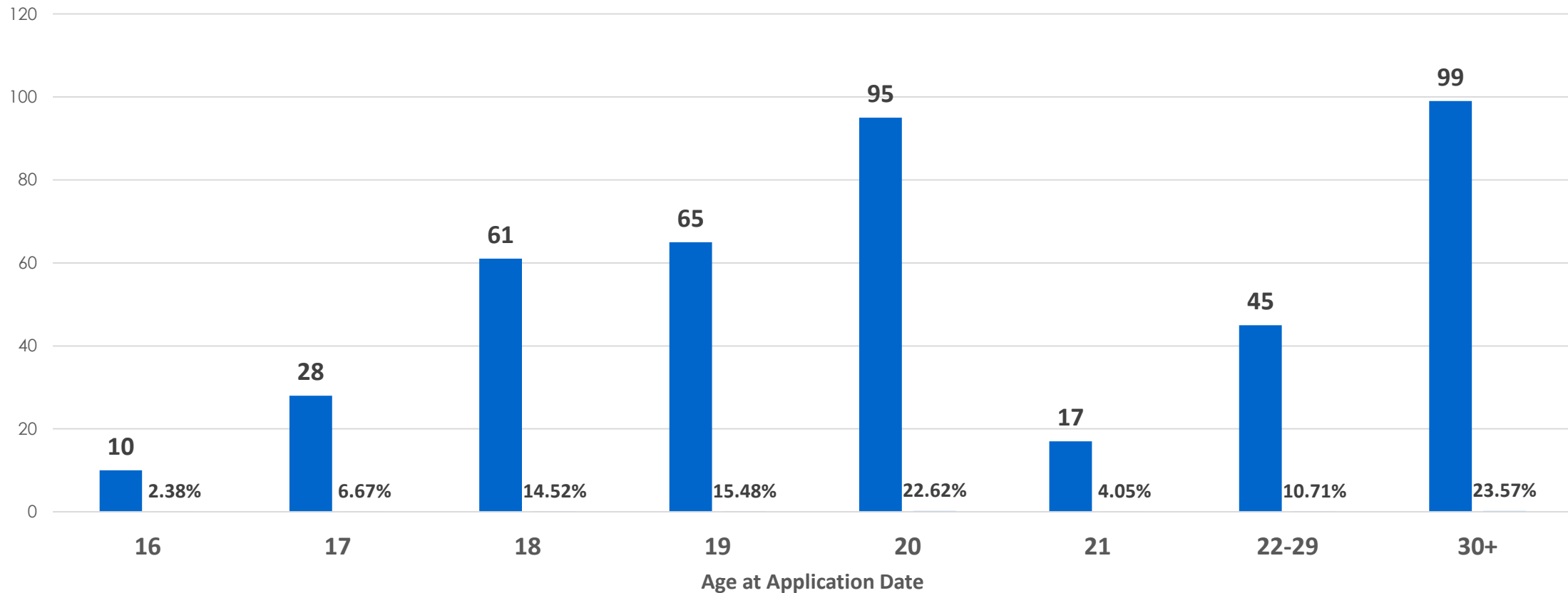
Applications Received by Month

July 2017

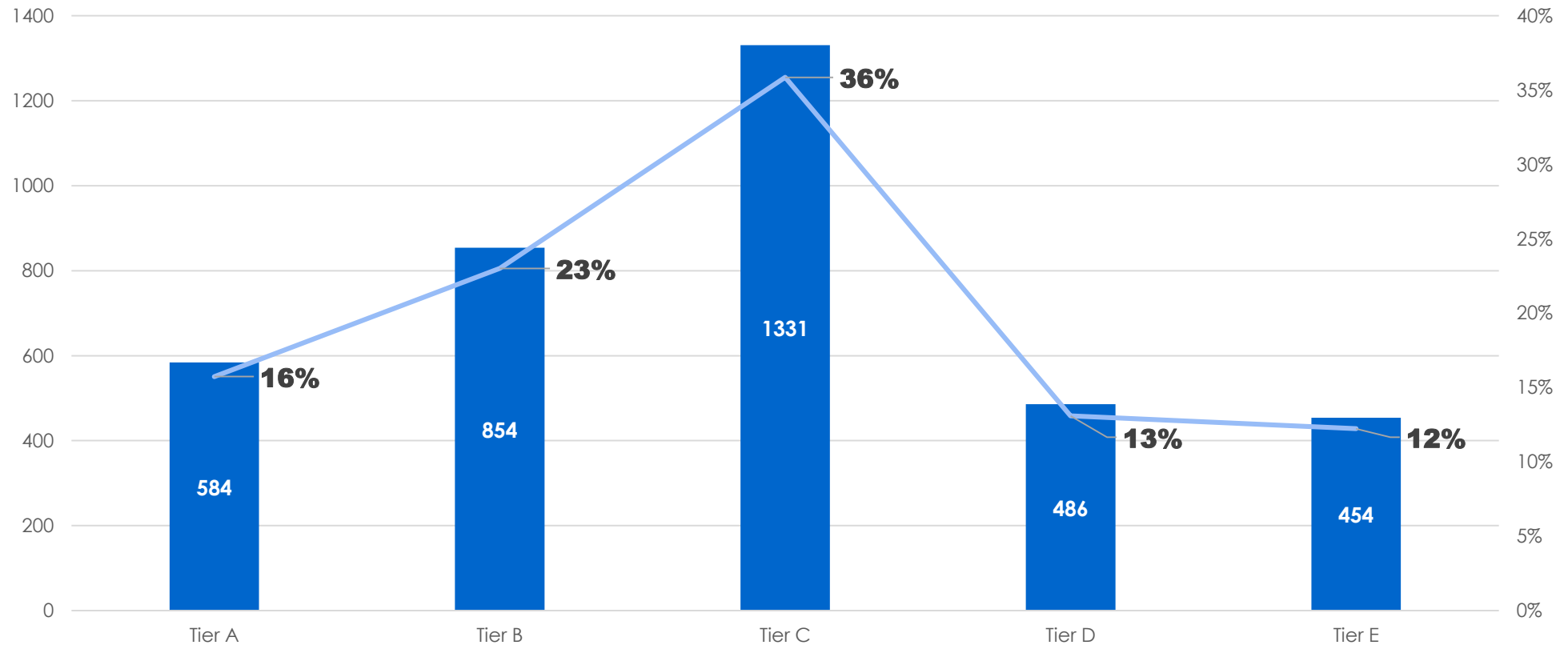


Eligibility Applications - Age Distribution

August 2016 – August 2017

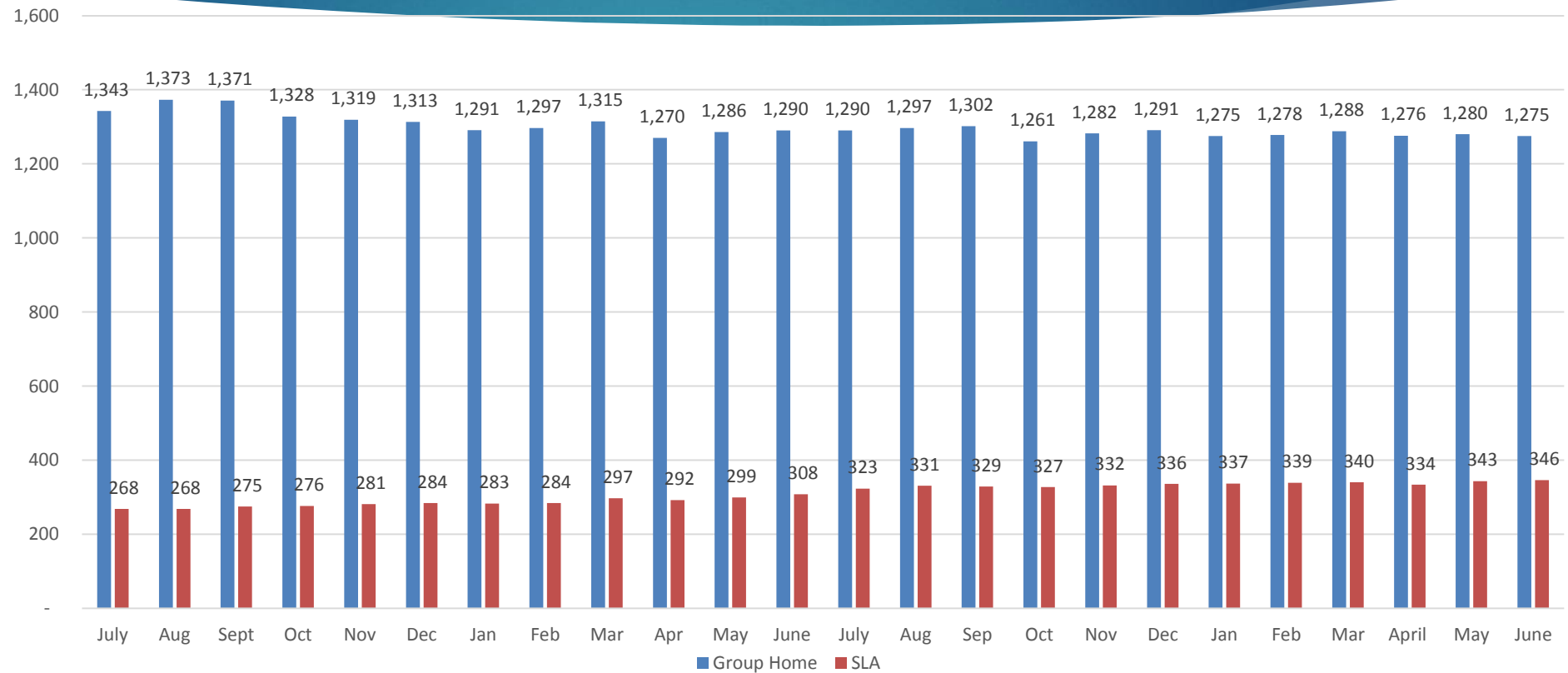


Tier Snapshot June 2017



Residential Settings

July 2015 – June 2017



- **Group Home – 1,275**
- **Shared Living Arrangements – 346**

DD Supported-Employment Placements Snapshot June 2017



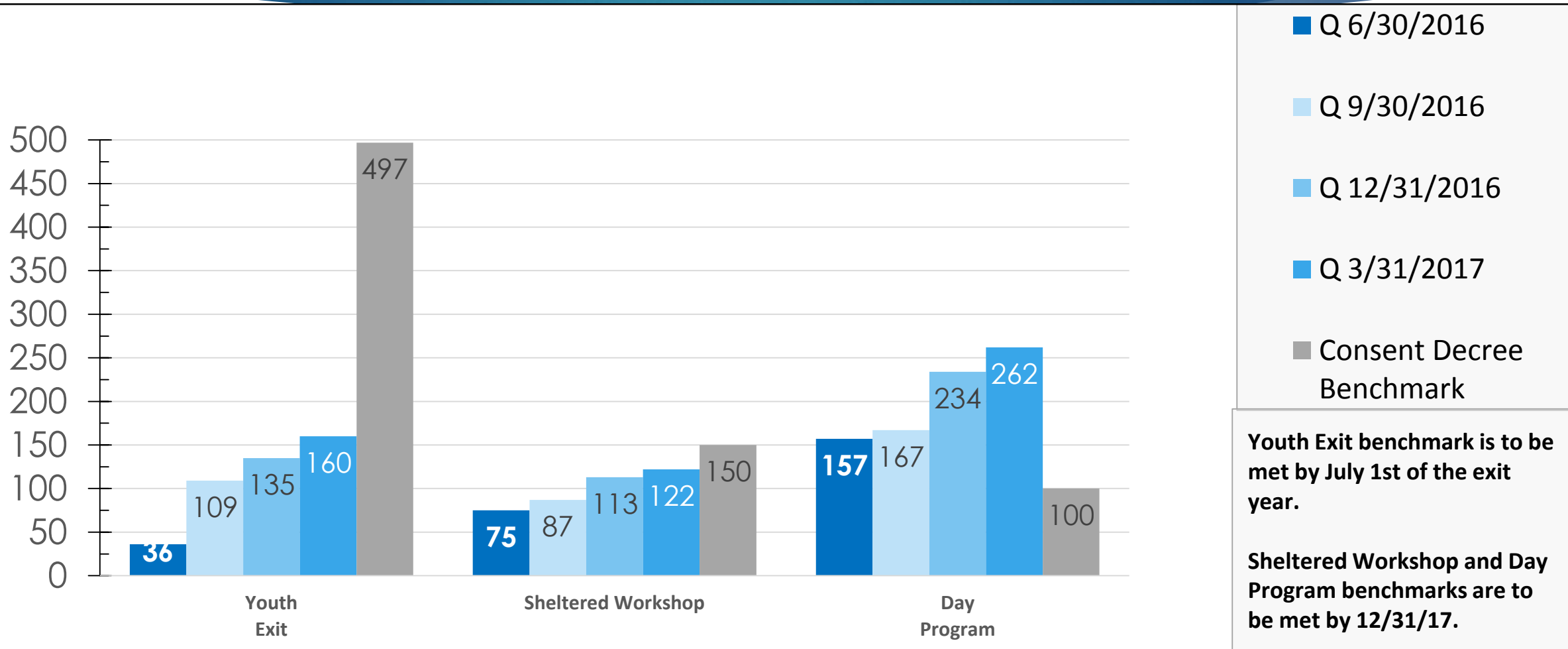
DD Placements	Count	%
Total Active Caseload ¹	3714	100%
Individuals placed in competitive employment	771	21%
Individuals placed in either competitive or provider paid ² employment	960	26%

1 Based on open authorizations

2. The Consent Decree distinguishes between competitive employment and employment paid/subsidized by providers.



Individual Employer Paid and Self Employment by Target Population





Individual Employer-Paid Employment

Average Weekly Hours Worked



Average Hourly Wages Reported



Consent Decree Update

Court Monitor Report July 26, 2017



- ▶ **Court Monitor Report Issued July 26, 2017**
 - ▶ Court Monitor reported “significant level of activity” by DDD, ORS, and RIDE
 - ▶ New report format: efforts to achieve and maintain compliance in five areas
- ▶ **Court Status Hearing/discussion July 28, 2017**
- ▶ **Next Court Hearing in January 2018**

Consent Decree Update

Court Monitor Report July 26, 2017



- ▶ Supported Employment Placements of March 31, 2017
- ▶ Quality Improvement
- ▶ Integrated Day Services
- ▶ Career Development Planning and Benefits Planning
- ▶ Provider Capacity